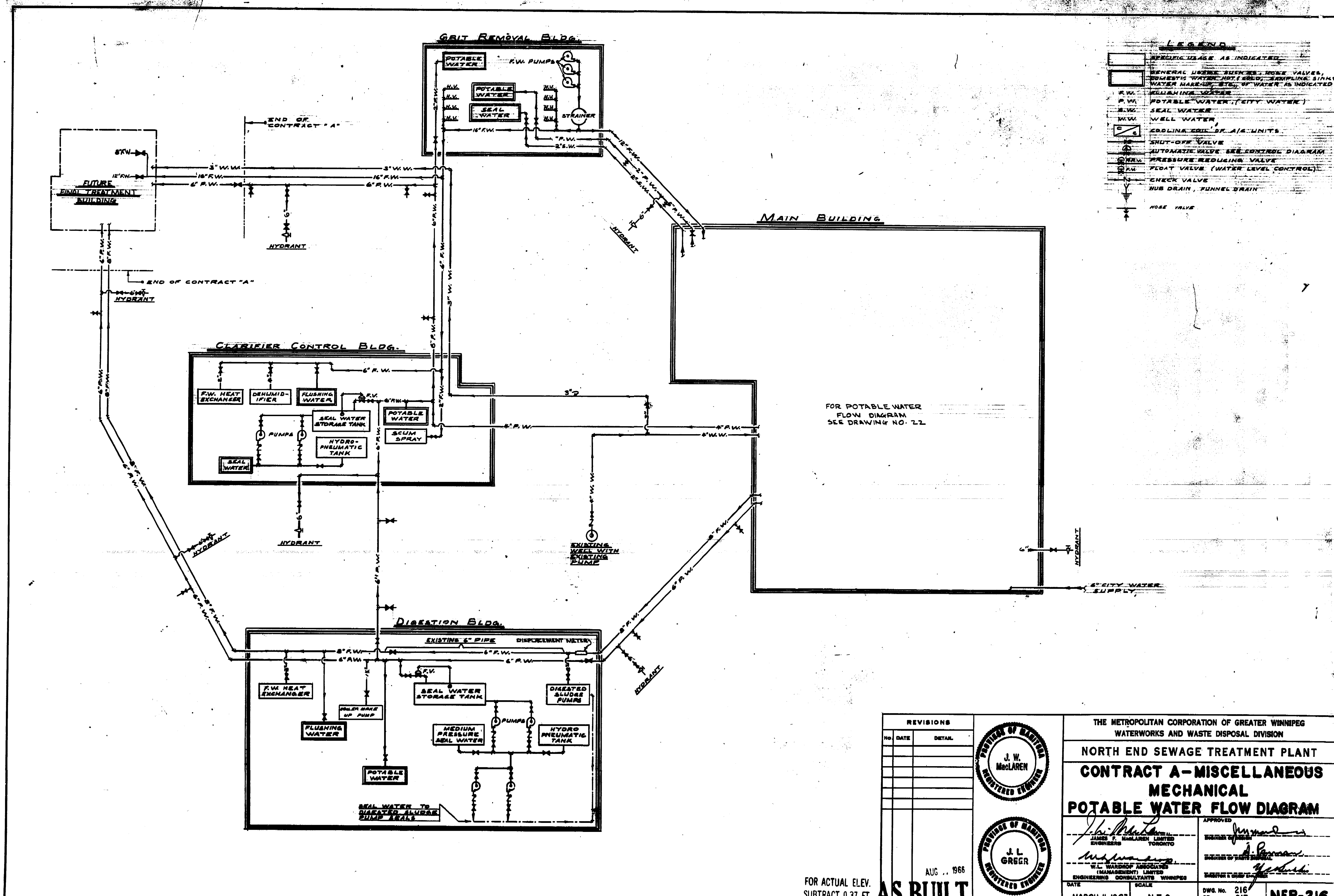


Drawing No. NEP-216

DETAILS

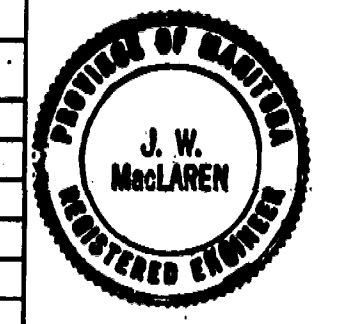


LEGEND

[Symbol]	SPECIFIC USAGE AS INDICATED
[Symbol]	GENERAL USAGE: TRENCH, ROSE VALVES, DOMESTIC WATER, NOT F.W. (SEWING, SINKS, WATER MARK-UP, ETC.) OF WATER AS INDICATED
[Symbol]	F.W. POTABLE WATER (CITY WATER)
[Symbol]	S.W. SEAL WATER
[Symbol]	M.W. WELL WATER
[Symbol]	COOLING FLUID OF A/C UNITS
[Symbol]	SHUT-OFF VALVE
[Symbol]	AUTOMATIC VALVE SEE CONTROL DIAGRAM
[Symbol]	PRESSURE REDUCING VALVE
[Symbol]	FLOAT VALVE (WATER LEVEL CONTROL)
[Symbol]	CHECK VALVE
[Symbol]	HUB DRAIN, FUNNEL DRAIN
[Symbol]	NOSE VALVE

FOR POTABLE WATER
FLOW DIAGRAM
SEE DRAWING NO. 22

REVISIONS	
No.	DATE



THE METROPOLITAN CORPORATION OF GREATER WINNIPEG
WATERWORKS AND WASTE DISPOSAL DIVISION

NORTH END SEWAGE TREATMENT PLANT
CONTRACT A - MISCELLANEOUS
MECHANICAL
POTABLE WATER FLOW DIAGRAM

APPROVED <i>J. W. MacLaren</i> JAMES F. MACLAREN LIMITED ENGINEERS TORONTO	ENGINEER OF SEWER <i>J. W. MacLaren</i>
<i>J. L. Greer</i> W. L. WARDROP ASSOCIATES (MANAGEMENT) LIMITED ENGINEERING CONSULTANTS WINNIPEG	ENGINEER OF WATER SUPPLY <i>J. L. Greer</i>
DATE MARCH 11, 1963	SCALE N.T.S.
DWG. No. 216 OF 217	NEP-216

FOR ACTUAL ELEV.
SUBTRACT 0.37 FT. **AS BUILT**

AUG. 1966